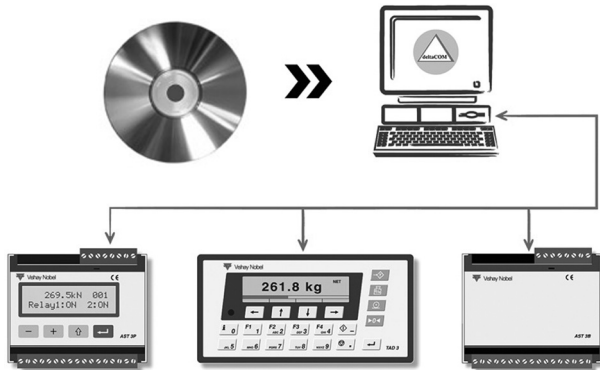


## Set-up and Calibration Software



### FEATURES

- Fast and easy configuration in windows
- The status of the setup can be checked also during operation
- Being able to configure, calibrate and trouble-shoot weigh systems on a standard PC

### FAST AND EASY CONFIGURATION IN WINDOWS

Software deltaCom is a valuable tool for local or remote, monitoring, configuration and servicing of Nobel's transmitters, indicators and weight processors in Generation 3. It works under windows 95/98/2000/NT4/ME/XP.

Basic functions supplied free of charge with all types of units in instrumentation Generation 3 are:

- set-up with enter of parameters
- calibration of instruments
- test of communication
- display of connected instruments
- upgrade of software in instruments

The extended registered version is optional with following additional functions:

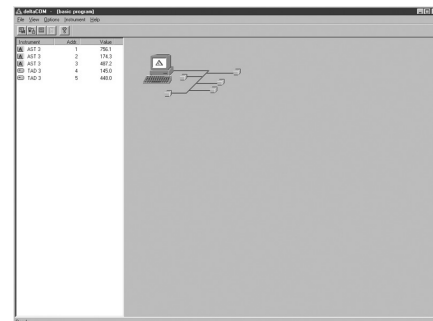
- back-up of the set-up parameters to the host computer
- restore parameters in instruments
- inspect and print set-up files

Functionally, this easy to use software provides the ability to configure and calibrate via the PC. It is also possible to store all set-up parameters in a text file that can be viewed and printed (option) deltaCOM displays live weight and status information and provides a work area to enter and change various weigh system parameters. The status of the set-up can be checked also during operation.

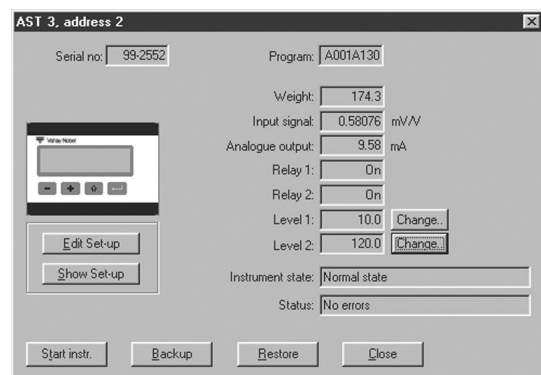
Being able to configure, calibrate, and trouble-shoot weigh systems on a standard PC reduces operator training, eliminates redundant tasks when multiple systems are being configured, and minimizes start-up time.

The ability to document set-up and calibration parameters is a valuable time-saver for facilities that require through traceability for quality standards and/or validation review.

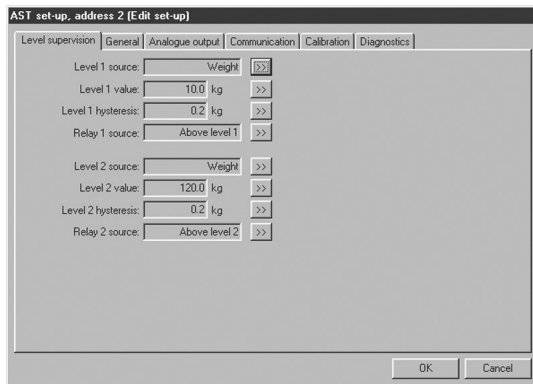
### INSTRUMENTATION OVERVIEW



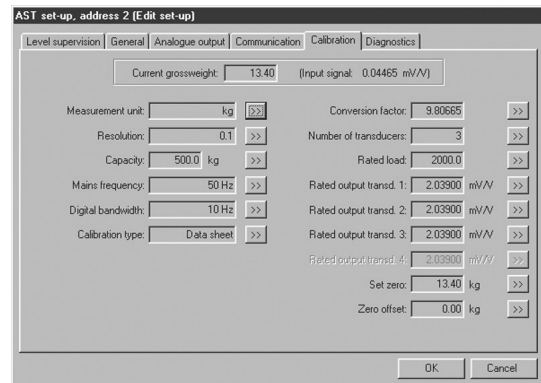
### DISPLAY OF ONE INSTRUMENT



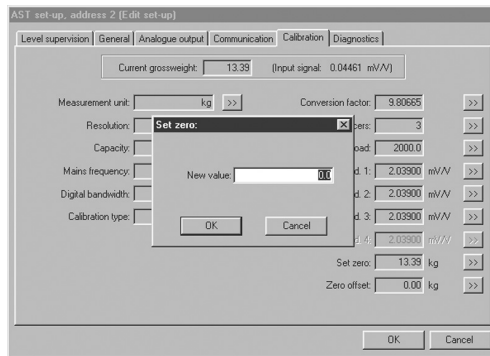
**SET-UP LEVEL SUPERVISION**



**SET-UP CALIBRATION**



**SET-UP SET ZERO**



**POSSIBILITIES**

The DeltaCOM Drawing will go here

## Disclaimer

All product specifications and data are subject to change without notice.

Vishay Precision Group, Inc., its affiliates, agents, and employees, and all persons acting on its or their behalf (collectively, "Vishay Precision Group"), disclaim any and all liability for any errors, inaccuracies or incompleteness contained herein or in any other disclosure relating to any product.

Vishay Precision Group disclaims any and all liability arising out of the use or application of any product described herein or of any information provided herein to the maximum extent permitted by law. The product specifications do not expand or otherwise modify Vishay Precision Group's terms and conditions of purchase, including but not limited to the warranty expressed therein, which apply to these products.

No license, express or implied, by estoppel or otherwise, to any intellectual property rights is granted by this document or by any conduct of Vishay Precision Group.

The products shown herein are not designed for use in medical, life-saving, or life-sustaining applications unless otherwise expressly indicated. Customers using or selling Vishay Precision Group products not expressly indicated for use in such applications do so entirely at their own risk and agree to fully indemnify Vishay Precision Group for any damages arising or resulting from such use or sale. Please contact authorized Vishay Precision Group personnel to obtain written terms and conditions regarding products designed for such applications.

Product names and markings noted herein may be trademarks of their respective owners.